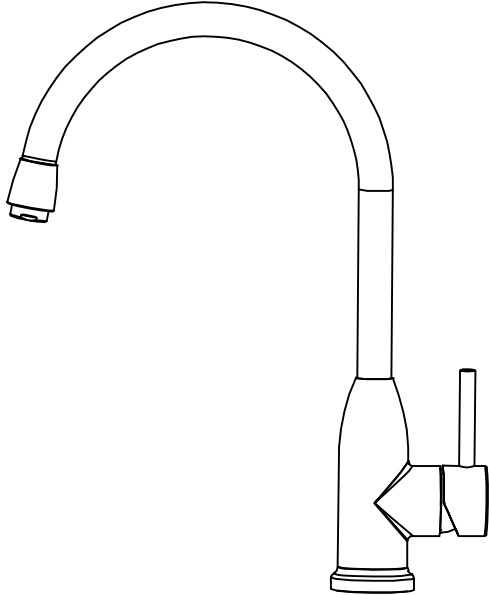


STAINLESS STEEL

SINGLE LEVER SINK MIXER INSTALLATION AND OPERATION INSTRUCTIONS



please read this installation manual carefully before installation
This manual is only guide the installation steps, please refer to the actual product shell panel

FIVE (5) YEAR LIMITED WARRANTY

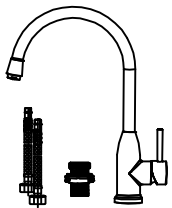
Our products have been manufactured under the highest the highest standards of quality and workmanship. We are warrants to the original consumers and hotel purchaser that should this ever develop a leak or drip during this 5 year warranty period, we will FREE OF CHARGE provide the parts necessary to put the product back in good working condition.

This warranty shall be effective from date of purchase as shown on purchase receipt.

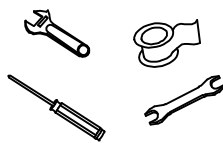
This warranty is valid for the original consumers and hotel purchasers only and excludes industrial, commercial, or non-hotel business use of the product. Product damage due to installation error, product abuse, or product misuse, whether performed by a contractor, service company, or yourself. We will not be responsible for labor charges and/or damage incurred in installation, responsible or replacement, not for incidental or consequential damages.



INSTALLATION INSTRUCTION SINGLE LEVER SINK MIXER

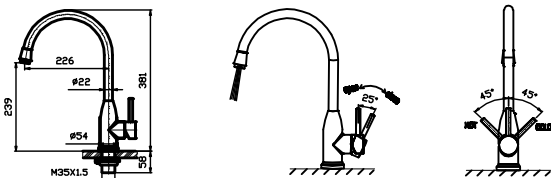


Standard Part List

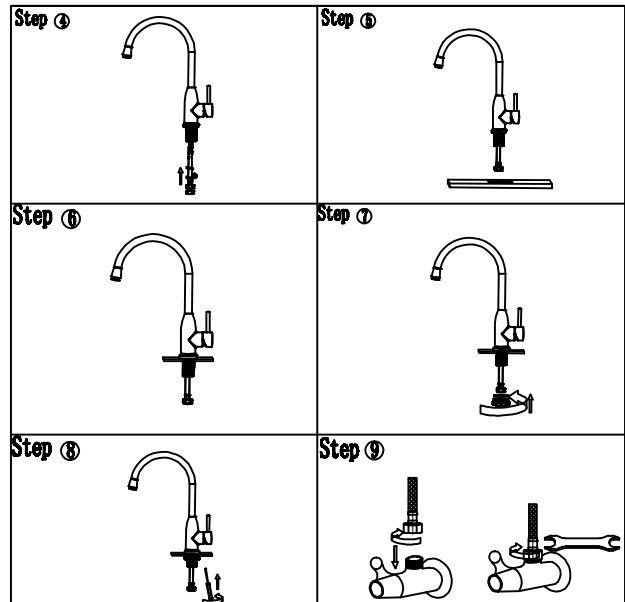
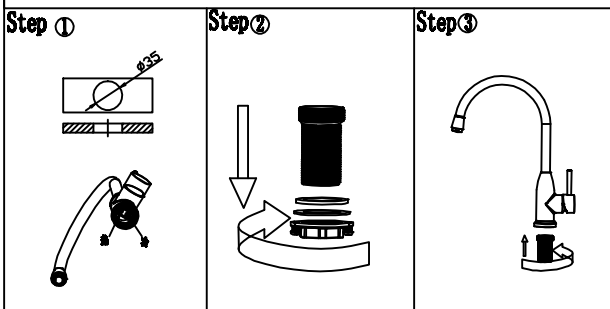


Tools You Will Need

Product Dimension Diagram



Faucet Installation Procedures



Notice:

Please removing all of the sand, silt and other things from the water hose before assembling, to avoid blocking the faucet and effecting water rate. Please use the special tools to disassemble it and wash with pneumatic equipment, if the faucet blocked.